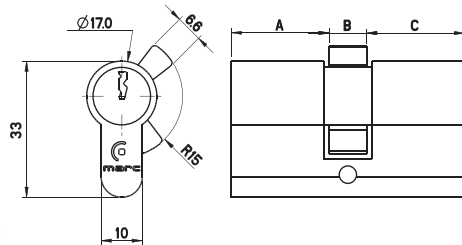
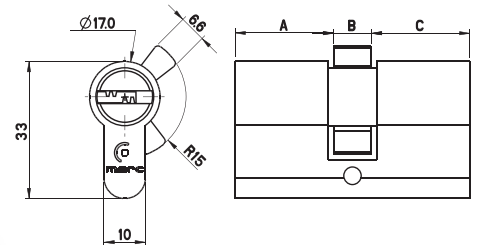


**E100**  
CILINDRO  
min. 10 un.



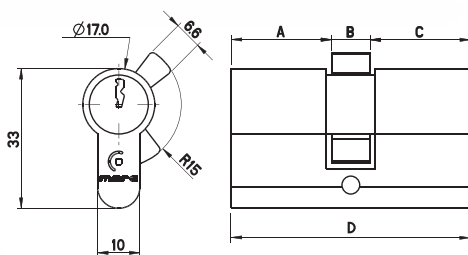
	A	B	C
27,5/27,5	22,5	10	22,5
30/30	25	10	25
30/40	25	10	35
30/50	25	10	45
30/60	25	10	55
30/70	25	10	65
35/35	30	10	30

**E500**  
CILINDRO ALTA  
SEGURANÇA  
min. 10 un.

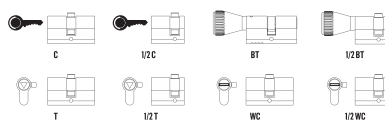


	A	B	C
30/30	25	10	25
30/40	25	10	35
30/50	25	10	45
30/60	25	10	55
30/70	25	10	65

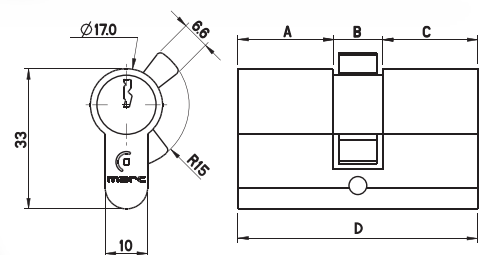
**E1000**  
CILINDRO  
min. 10 un.  
(CORTA FOGO)



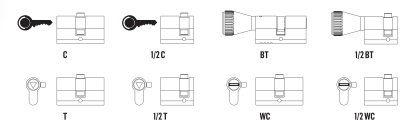
	A	B	C	D
symmetrical	25 - 60	10	25 - 60	max.130
asymmetrical	25 - 80	10	25 - 80	max.130
1/2 CIL	52	10	25 - 95	max.110



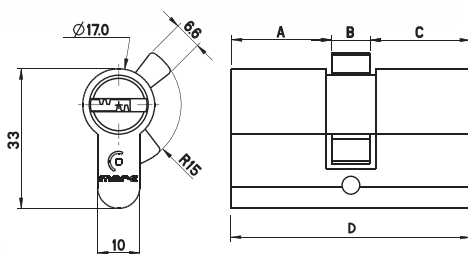
**E1500**  
CILINDRO  
ANTI-BUMP  
min. 10 un.



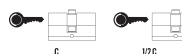
	A	B	C	D
symmetrical	25 - 60	10	25 - 60	max.130
asymmetrical	25 - 80	10	25 - 80	max.130
1/2 CIL	5	10	25 - 95	max.110



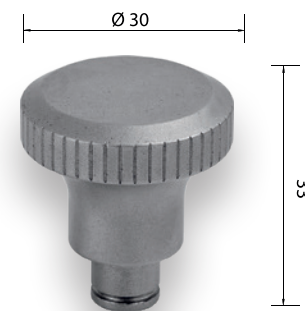
**E5000**  
CILINDRO ALTA  
SEGURANÇA  
min. 10 un.



	A	B	C	D
symmetrical	26,5 - 61,5	10	26,5 - 61,5	max.133
asymmetrical	26,5 - 81,5	10	26,5 - 81,5	max.133
1/2 CIL	5	10	26,5 - 96,5	max.111,5



**BT100**  
LATÃO



**BT102**  
LATÃO

