



**4350**



**UNHEIRO 4309**



**4210 / 4310**

**EMBALAGEM - PACKAGING  
EMPAQUETADO - EMBALLAGE**

**50 unidades por caixa**  
50 pieces per box  
50 unidades por caja  
50 pieces par boîte

**MATERIAIS - MATERIALS  
MATERIALES - MATERIAUX**

**Alumínio - Zamak - Inox**  
Alluminium - Zamak - Stainless Steel  
Aluminio - Zamak - Acero Inox  
Alluminium - Zamak - Inox

**FIXAÇÃO - FIXING  
FIJACIÓN - FIXATION**

**Parafusos incluídos**  
Screws included  
Tornillos incluidos  
Vis inclus

**ACABAMENTO - FINISHING  
ACABADOS - FINITION**

**Lacado**  
Powder painting  
Lacado  
Laqué

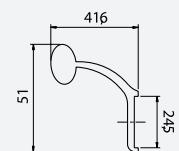
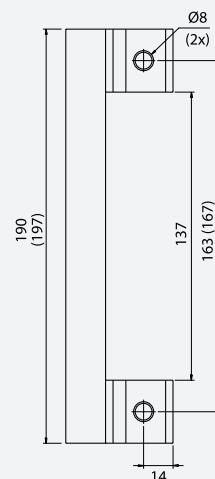
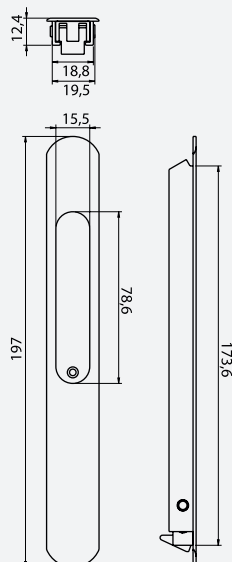
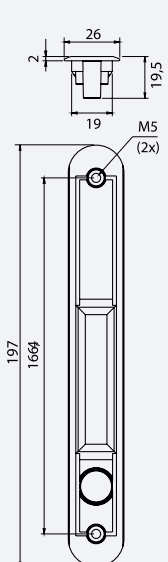
**NORMA - STANDARD  
NORMA - NORME**

EN 1670  
EN 13126

**OBSERVAÇÕES - COMENTS  
OBSERVACIONES - OBSERVATIONS**

**4210 / 4310 / 4350**  
**24 unidades por caixa**  
24 pieces per box  
24 unidades por caja  
24 pieces par boîte

**FECHO LATERAL DE EMBUTIR · LATERAL INSERT BARREL · CIERRE DE EMBUTIR · VERROU COULISSE**



**4310: 167mm**  
**4210: 163mm**

**4310 → 4308**  
**4210 → 2150 / 2170**