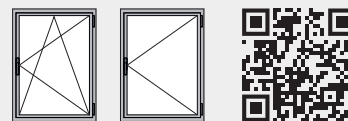


# TRM1000

TRANSMISSION

New transmission TRM1000 for European groove with 5,5mm backset for tilt and turn and side hung casements

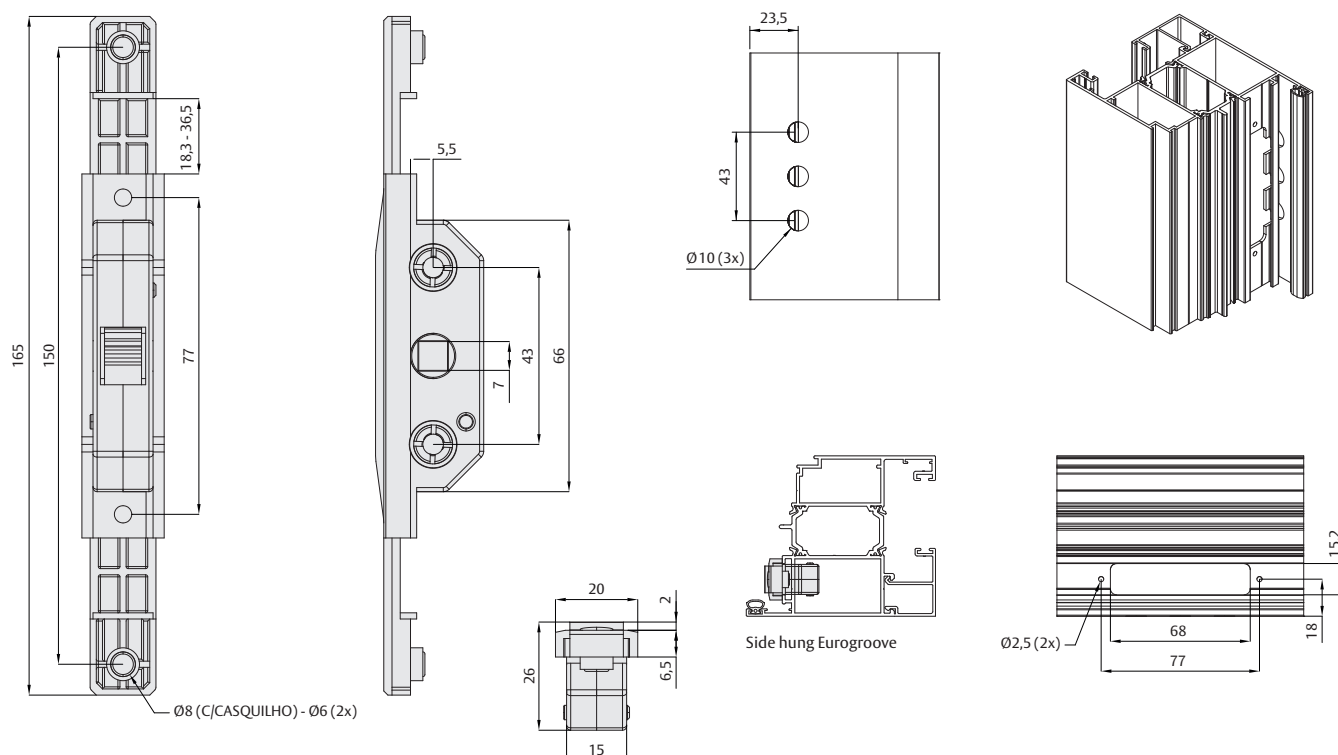
- Springs that adjust to the profile channel this prevents vibration and torsion
- Frontal fixation
- Unidirectional transmission allows 180° rotation of the handle, compatible with a 7mm spindle.
- Supplied with a nylon reducer for cremone rod, from Ø8mm to Ø6mm.
- Allows the usage of a window handle with more aesthetic body
- Threaded holes - 43mm which make it compatible with a wide variety of handles
- Material: Zamak
- 24 units per box



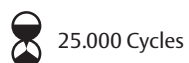
c.e.



24 un.



EN13126



25.000 Cycles



480h | Grade 5